



Middlesex
University
London



INTERNATIONAL MOBILITY GUIDE





MIDDLESEX UNIVERSITY OFFERS MORE THAN A WORLD-CLASS EDUCATION. WE TAKE OUR STUDENTS ON JOURNEYS THAT TRANSFORM THEIR LIVES. WE EMPOWER THEM WITH THE TOOLS, ATTRIBUTES AND OPPORTUNITIES THEY NEED TO TURN THEIR POTENTIAL INTO REAL-LIFE SUCCESS.

CONTENTS

Welcome to Middlesex	04
Discover Middlesex	06
Why choose us	08
Halls of residence	18
Student visa route	19
Information for Health Insurance	20
How to use the International Mobility Guide	21
Understanding the Guide	22
Courses	25
Faculty of Arts and Creative Industries	27
Faculty of Professional and Social Science	38
Faculty of Science and Technology	60



WELCOME TO MIDDLESEX

Middlesex is more than a university. We're a community working together to realise everyone's potential.



I've already been so impressed by how our community makes a real difference through education, research and how we engage with the world."

NIC BEECH
PRO VICE-CHANCELLOR

We offer more than a world-class education. While your academic success is crucial, we challenge and empower you to grow as a person and a professional too. It is our ambition to equip you with the in-depth knowledge and transferable skills you need to drive positive change through your career, wherever it may take you. We are a well-established, modern and forward-thinking university offering career focused courses to prepare students for the world of work.

The International Mobility team have designed this guide to provide you with the programme and module information offered at Middlesex University. It is important that you contact your International Mobility/Exchange co-ordinator as we have pre-arranged Institutional agreements with your home institution for specific programmes and courses which you can study.



TOP 5

Modern University in the UK



167

Countries represented on campus



SILVER AWARD

for our outstanding teaching



THE QUAD



THE GROVE



COLLEGE BUILDING



THE RITTERMAN BUILDING

**MIDDLESEX UNIVERSITY
VIRTUAL TOUR
- CLICK HERE**



HATCHCROFT BUILDING



THE PAVILLION



MDX HOUSE



THE SHEPPARD LIBRARY

DISCOVER MIDDLESEX: A GLOBAL UNIVERSITY

3 **CAMPUSES
WORLDWIDE**



London



Dubai



Mauritius



41,000

MIDDLESEX STUDENTS WORLDWIDE

239,000

FORMER STUDENTS IN OUR
INTERNATIONAL ALUMNI NETWORK





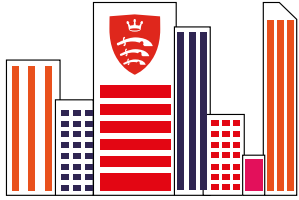
90%

**OF OUR RESEARCH IS
INTERNATIONALLY
RECOGNISED (Ref 2014)**



145

**NATIONALITIES REPRESENTED
BY OUR STUDENTS**

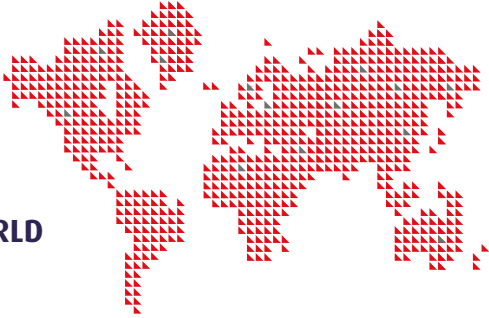


80

**PARTNER INSTITUTIONS
AROUND THE GLOBE**

15

**REGIONAL OFFICES IN
LOCATIONS AROUND THE WORLD**



WHY STUDENTS CHOOSE MIDDLESEX

FIVE REASONS TO CHOOSE MIDDLESEX

Middlesex University is where students work alongside experts, hands-on learning meets industry experience and ambitions turn into reality. And we want you to join us. Make our campus your space. Here you'll learn the skills you need to make an impact on businesses and society.

1

YOU LEARN AND EXPERIENCE INDUSTRY SIDE BY SIDE

Research, industry connections and innovative thinking influence all of our teaching. Your tutors share their experience and explain theory. You'll work on live projects and find work placements across the city. All of this, combined with our career advice, helps you stand out as a graduate.

2

WE DON'T BELIEVE IN ONE-SIZE-FITS-ALL

Coming to university can feel overwhelming. But you'll always have someone you can turn to. We treat you as an individual and listen to what you need. From the moment you join us, you'll have a team of friends, lecturers and support staff cheering you on. At Middlesex, we've always got your back.



**Top modern university in the UK
in Times Higher Young University
Rankings (2019)**



“

There were so many friendly Middlesex students that I instantly felt welcome.

I've discovered a whole new side of me thanks to the new experiences and support that I get here.

HANISS
BA MUSIC BUSINESS AND ARTS MANAGEMENT

3

OUR FACILITIES HELP YOU PREPARE FOR YOUR CAREER

Everything you need is in one place on our campus, from workshops to studios, labs to study spaces. You'll use the same equipment and software as the professionals, so you'll feel confident when you start your first role as a graduate.

4

YOU EXPERIENCE ALL LONDON HAS TO OFFER FOR WORK AND PLAY

Whether you're new to London or already live locally and want to stay here to study, we'll help you make the most of all the city has to offer. You'll never be short of opportunities to network with professionals, create connections and find work experience.

5

OUR COMMUNITY IS DIVERSE — AND DETERMINED

Students join us from 140 countries, so you never know who you might meet, or what you might learn about the world. No matter where they're from or who they are, students always find they have one thing in common. They all share the same determined mindset and drive to take the next step in their unique journey to success.



Voted one of the top 15 international universities in the world by Times Higher Education

YOU'RE PART OF LONDON HERE

You'll find our campus in Hendon, north London zone 3. We're surrounded by green space, but you'll never be far from the action. It's easy to get around too – whether you're heading into the city, travelling around the UK or flying back to your home country.



||

I'm from London but I'm seeing lots of new places because I'm going out and having fun. I don't think I'd ever been to Chinatown before I went down there with new friends.

London is unbeatable for jobs and career connections too—all the major companies have offices here. For example, through MDXworks, executives from KPMG came in to talk with us. That was an amazing networking opportunity.

GILLIAN

BSc BANKING AND FINANCE





When I first came to London from the Czech Republic, it was amazing seeing art and creative people everywhere. It's perfect for gigs, exhibitions and photography. London is great for networking too. Even with a little experience, I've already had great opportunities for internships after just four months of studying.

I used to live in central London and then I moved closer to campus. I love Hendon because it's full of students like me. It's really easy to get around to my favourite places – Camden is just 14 minutes by train.

PETRA

BA FASHION COMMUNICATION AND STYLING

YOU EXPLORE LONDON FROM HERE

Moving to Middlesex?
Already a local? London has more to offer than possibly any city in the world. There's always something new to see and do, whether you're looking for inspiration for your work or somewhere to explore with your friends.



“

My favourite places in Shoreditch are Boxpark and Hoxton Street. There are so many food places and Hoxton Street has a few cool bars on it to go for a drink.

JORDAN
BSC PSYCHOLOGY



DISCOVER LONDON FROM THE NORTHERN LINE

Because we're on the Northern line, you're only minutes away from great spots to relax, eat and drink. Here are a few of our students' top picks.

LEICESTER SQUARE AND COVENT GARDEN

Free afternoon? Find somewhere to sit with a coffee in Covent Garden or discover some of the hidden gems nearby.

DOVER STREET MARKET, NEAR LEICESTER SQUARE

If Oxford Street isn't your scene, head to Dover Street Market for affordable streetwear, edgy jewellery and a cake from Rose Bakery.

"I like to head there with my mates to just look around and also visit the café in the top floor. It's full of very fashionable people so it's good inspiration for me."

DAN

BA GRAPHIC DESIGN

ANGEL

Pick up fresh fruit and veg from Chapel Market or browse quirky antiques at Camden Passage.

"I interned here, I also buy my coffee and get my haircut there. It's just a lovely part of London – there are loads of really nice shops and little side streets."

DAN

BA GRAPHIC DESIGN



My favourite places in Shoreditch are Boxpark and Hoxton Street. There are so many food places and Hoxton Street has a few cool bars on it to go for a drink.

KATERINA

BA MUSIC BUSINESS

HAMPSTEAD HEATH

Want to escape the hustle and bustle? One of London's most popular green spaces is only half an hour away from Trafalgar Square.

"I go there when I want to have some quiet time. It's so peaceful, you're surrounded by nature. It's the best place to get a break from the usual busy London."

LILY

BA MUSIC BUSINESS AND ARTS MANAGEMENT

SHOREDITCH AND OLD STREET

By day – explore indie shops in graffiti-lined streets. By night – eat street food and discover great bars.

"I love the whole atmosphere and the vintage clothing styles. My favourite place would be a shop called Rokit, I always find the perfect vintage pieces for me whenever I go there."

VIVIAN

BSc PSYCHOLOGY

YOU MEET, RELAX FIT IN HERE

As well as top facilities, we have lots of spaces where you can meet friends for a coffee and grab lunch between lectures. We cater for kosher, vegetarian, vegan, gluten-free and more.



MDX HOUSE

MDX House will probably become your second home as a Middlesex student. By day, relax on comfy sofas and enjoy food from the Eat Street food court. By night, play pool or enjoy a big night out with friends.

THE QUAD

Join us on an Open Day and The Quad is probably one of the first places you'll go. Its striking glass roof floods the open space with light. You'll find plenty of places to sit and pass time between lectures.

PLACES FOR WORSHIP

Our community is diverse. Whatever religion you follow, you're likely to meet others here with the same beliefs. On campus, we have a prayer room. In the local area, there are different places of worship that welcome students.



MAKING OUR CAMPUS SUSTAINABLE

Looking after the planet is important to us and our students. Around campus, we're making lots of changes (big and small) to use resources wisely and reduce our impact on the environment. One area we're working on is reducing single-use plastics. From January to June 2019:

- Water fountains used over 270,000 times
- 1,185 reusable cups sold
- £4,700 saved by students thanks to the 20p discount.

WHAT TO EAT AND DRINK

- Costa coffee
- Subway
- Greggs
- Tortilla | California Burritos & Tacos
- Fairtrade and Global Food

We've got a local convenience store open until 8pm for your everyday essentials. And there are Amazon Lockers here too.



YOU BOOST YOUR WELLBEING HERE

Everyone knows the physical benefits of exercise. But we know it's just as important for your mental health. To look after your mind and body while you study, we challenge you to make the most of all we offer on campus.

Living on a budget shouldn't get in the way of your wellbeing. At Middlesex, you don't even have to commit to a gym membership. Join us for free social sports sessions twice a week on campus. They're a great way to reduce stress, meet new people and take our mind off your studies.

THREE WAYS TO BOOST YOUR FITNESS AND MOOD

- 1** **Join a sports team** – pick from over 30 sports teams including rugby, cheerleading, taekwondo and more.
- 2** **Sign up to Fitness Pod gym** – do your own thing or work with a personal trainer. Memberships start from £15 per month.
- 3** **Try a class** – our qualified trainers lead a range of classes, from yoga to CrossFit.





SPORTS FACILITIES

Book pitches and courts to play with friends:

- 2x 3G 7-A-Side football pitches
- 3 floodlit outdoor courts
- Bouldering wall
- Table tennis tables
- Basketball hoops
- Tennis court

You'll also be able to use local facilities for rugby, golf, hockey, athletics, canoeing and swimming.



I joined Middlesex because of their strong reputation as a London Sports Institute. I spend most of my time at Barnet Copthall Stadium, home of Saracens Rugby Club where we have high quality equipment such as the force plates and the biodex.

Outside my course, getting involved with sports teams was the best decision I made. It's easy to meet people with similar interests, but it's also a chance to play competitively. I've enjoyed captaining the tennis team and coaching the Give it a Go session for people who are new to tennis.

KYLE

BSc SPORT EXERCISE SCIENCE
(PHYSICAL EDUCATION AND COACHING)

HALLS OF RESIDENCE

There are many benefits to living in halls of residence. Here are the top reasons to choose halls.

→ STRONG STUDENT COMMUNITY

Living in halls is a great way to meet people. Make the most of shared spaces to study, eat, watch TV and play sport together.

→ SAFETY AND SECURITY

Our halls have 24-hour reception and security teams so there's always someone around to help. The team will also fix maintenance problems quickly with no hassle.

HOW DO I APPLY?

Please click [here](#) to complete an online application for Halls of Residence. You must have received your Unconditional Offer Letter for your Exchange Study/Study Abroad as you will be required to state your Student ID.

FULL YEAR EXCHANGE VISA

- You must have an unconditional Exchange offer to study at an institution which is licensed by the Home Office as a Student route visa sponsor. Middlesex

CONTACT ACCOMMODATION TEAM

Tel: +44 (0)20 8411 6121

Email: accomm@mdx.ac.uk



STUDENT VISA ROUTE

University is a licensed Student route (General) visa sponsor.

- Once you have met all application requirements, the Visa team will send you a Confirmation of Acceptance for Studies (CAS) to your personal email address when we offer you a place to study. This shows that you meet the academic and financial conditions.
- It is important to email the exchanges team the Original and English Translated Copy of the Transcript and English Language Certificate.
- Your CAS will have a reference number which you must state on your visa application form. The Visa Advisor will check it when they process your visa.
- For further information on visa and welfare, please [click here](#).

Important Information:

Student route visa applicants from EU countries will need to be able to show they have the necessary funds in place (£1334 per month for up to 9 months) if you are asked to do so. You do not need to provide any evidence of finance unless you are specifically requested to do so after a visa application is made.

It is likely that very few students will be required to submit this evidence. If you are asked and can not provide it, your visa application will be refused.

Your Student route visa only allows you to study at the institution who issue your CAS. For further information please click [here](#).

SEMESTER EXCHANGE VISA INFORMATION

For Single Semester Exchange, EU, EEA and Swiss citizens do not need a visa to come to study in the UK provided you intend to be here for less than 6 months. As you are on single semester exchange, this condition will apply to you. For more information, please see [click here](#).

If you require further information or have any questions, click [here](#) or please contact the International Advice team on intadvice@mdx.ac.uk

Please see the [current list of countries whose nationals will require a visa](#) for entering the UK as a visitor or for any other reason involving a visit of less than 6 months. Click [here](#) to check if you require a Standard Visitor Visa



INFORMATION FOR HEALTH INSURANCE

STUDYING IN ENGLAND FOR 6 MONTHS OR UNDER

If you are visiting the UK from the EU, Norway, Iceland, Liechtenstein or Switzerland, you should:

- Have travel or health insurance that covers the duration of your trip
- Bring your European Health Insurance Card (EHIC) if you are eligible to continue using it in the UK
- Bring your S1 form if you are eligible
- Bring your S2 form if you are eligible

For more information about the European Health Insurance Card (EHIC), click [here](#).

The NHS operates a residence-based healthcare system. This means visitors to England may have to pay for NHS healthcare, depending on their circumstances. Some services, such as accident and emergency (A&E) and visits to a general practitioner (GP), are free to everyone. Urgent treatment or treatment that cannot safely wait until you leave the country and return home will always be provided, and the matter of payment dealt with later. The government always advises visitors to the UK to take out travel or health insurance. This means that you can reclaim any healthcare costs you are required to pay from your insurer. Check your insurance has the necessary healthcare coverage to make sure you can get the treatment you need during your visit.

If you apply for your visa from overseas and it is granted for less than six months or you are required to make a number of occasional visits to the UK for short study periods, we strongly advise you take out medical insurance as you will be liable for NHS charges for any treatment you receive in the UK (except for medical emergencies, however this is limited). You will also need to pay for any medicines prescribed by a doctor. The UKCISA website has more information about eligibility and medical costs. Certain countries have a reciprocal agreement with the UK which may entitle you to some free healthcare on the NHS but you should seek advice from the health authorities in your home country about what treatment will be covered. EEA nationals should obtain a European Health Insurance Card (EHIC), but this may not be valid in the UK after 31 December 2020.

Information about eligibility and medical costs.

This is especially important if you have an existing long-term condition. You must tell your insurance company about any health conditions you have to make sure you can get the cover you need. Speak to your doctor for advice before you travel and make plans for how to care for your condition when you are in the UK. You should also bring your health condition identification or a letter saying what medication you are taking. For more information about health insurance; click [here](#).

If you have any questions regarding Health Insurance for your study exchange, please contact the International Advice Team on intadvice@mdx.ac.uk

HOW TO USE THE GUIDE

The Middlesex University International Mobility Guide has been designed to indicate the modules available for each programme for Year 2 studies at Level 5.

The Guide indicates the MU (Middlesex University Credits), and the ECTS Equivalent to help you. It specifies the programme by the faculty and the level/year of study. Some of our programmes will indicate the compulsory modules only, whereas other programmes will have a mix of compulsory modules and optional modules which you

will be required to choose from.

The Programme leader will assess your transcript, and the modules requested to ensure that you have the capability and the right skills and knowledge to pursue your exchange at Middlesex University Please read the important information below:

- Student's chosen programme must be in line with your Institutional Agreement.
- At Middlesex University, most of our programmes offered will include compulsory modules, some modules are worth 15 Credits, 20 Credits, 30 Credits, 60 Credits or 90 Credits.
- Compulsory Modules must be studied. Where you can choose modules, it will indicate 'please choose module', so please read carefully.
- Please choose modules from one programme and not from various programmes as it would not be possible to do this.
- Modules are subject to validation and availability
- Modules requested for your exchange study will be confirmed through your 'Congratulations: Unconditional Offer'. Modules must be stated in the Learning Agreement and emailed to exchanges@mdx.ac.uk prior to your exchange study.
- For Programme information, click on the Programme name and it will direct you to our website where you can read the course content information.
- We do not have Timetable information throughout the nomination process nor application process. Timetables for your chosen modules will be available to the exchange student once they have enrolled on our 'UniHub', therefore modules requested are not guaranteed.
- Please kindly note that students are not allowed to choose modules from different years, nor mix and match between Postgraduate and Undergraduate modules. It is strictly not allowed.
- Exchange Students are strictly not allowed to undertake dissertation modules.
- **IMPORTANT:** Postgraduate study is limited to Single Semester study because Middlesex University standard Postgraduate degrees are only one year in duration.

ENGLISH LANGUAGE REQUIREMENT

- If English is not your first language, you will need to confirm you meet the level for your programme. The English Language Requirement document is found [here](#).

STUDYING IN ENGLAND FOR MORE THAN 6 MONTHS

If you are applying for a student route visa and coming to the UK for 6 months or longer, you will be required to pay the immigration health surcharge. This costs £470 and is in addition to the visa application fee.

The immigration health surcharge will entitle you to access NHS healthcare at no additional cost in the same way as a permanent UK resident. This includes at the GP or in a hospital. You may need to pay for dental and optical treatment as well as medicine prescribed by the doctor and collected from a pharmacy.

If your application includes part of a year that is less than six months, you'll only pay half the charge (£235) for that year. Family members applying for a dependant visa will also be required to pay the surcharge.

If you're applying for entry clearance from overseas, the surcharge will apply to visas granted for more than 6 months. If you're applying for further permission to stay in the UK, you will pay the surcharge regardless of the new visa length.

IF YOU ARE UNSUCCESSFUL

If your visa application is not successful, you will automatically be refunded the immigration health surcharge (but not the visa application fee). The surcharge will not be partially refunded if you depart the UK earlier than the expiry of your visa.

The surcharge is also not refunded if you do not use the NHS during your time in the UK. the NHS during your time UK.1



UNDERSTANDING THE GUIDE: IMPORTANT TERMS

SEMESTERS OR TERMS:

The academic year is not split into semesters, but terms. We identify Learning weeks over three key terms and there are 24 learning weeks over all three terms. In some programmes there are modules which resemble 'semester only' modules which run from learning week 1 to 12, or 13 to 24. These will be made clear in the module catalogue below. Week 1 starts in September or October of the academic year and goes through to the following April or May. See term dates and learning weeks below:

Learning weeks 1 to 12:

26 September 2022 – 16 December 2022

Learning weeks 13 to 24:

9 January 2023 – 31 April 2023

Vacation dates:

Christmas Break

19 December 2022 – 6 January 2023

Easter Break

3 April 2023 – 14 April 2023

MODULE:

This is the term used to describe specific 'units' within a subject area. You will need to take a number of modules and this will make up the basis of your study programme or course.

CREDITS:

Credits indicate how much a particular module is worth in comparison to the overall degree. The credits within the UK are related to ECTS at a ratio of 2 to 1. All our modules are published as UK credits and the ECTS equivalent is indicated here below. Whilst you are at Middlesex on exchange you will need to take a minimum of 60 UK credits per semester (or 30 ECTS) or 120 credits (or 60 ECTS) for a full academic year. This will then transfer back to your host University and will be made clear on your transcript.

PRE-REQUISITES:

These are specific modules/classes/work you must have completed before you can enrol on a module. Make sure to only apply for classes where you have taken the pre-requisites as registration may be delayed if you elect to take a course which you do not qualify for.

COURSES CONTENTS

FACULTY OF ARTS AND CREATIVE INDUSTRIES	27
Art and Design	29
Creative Writing and Media	32
Cinematics and Games	33
Performing Arts	35
FACULTY OF PROFESSIONAL AND SOCIAL SCIENCE	38
Accounting and Finance	40
Business and Management	41
Economics	44
Human Resource Management	45
Marketing	46
Tourism and Hospitality Management	47
School of Law	49
FACULTY OF SCIENCE AND TECHNOLOGY	60
Natural Science Department	
Biosciences	62
Environmental, Occupational and Public Health	63
Medical Science and Technology	64
Computer Science Department	70
Computer and communication engineering	70
Computer Science and Informatics	71
Department of Design Engineering and Mathematics	72
Mathematics	74
Psychology	76
Sports and Exercise Science and Rehabilitation	78
LSI Department	78

SINGLE SEMESTER EXCHANGE COURSES

Faculty of Arts and Creative Industries Undergraduate Semester Exchange	35
Faculty of Arts and Creative Industries Postgraduate Semester Exchange	36
School of Law Undergraduate Semester Exchange	53
School of Law Postgraduate Semester Exchange	55
Environmental, occupational and Public Health Postgraduate Semester Exchange	65
Design Engineering and Mathematics Postgraduate Semester Exchange	74

FACULTY OF ARTS AND CREATIVE INDUSTRIES



**DESIGN, MEDIA, PERFORMING ARTS
AND VISUAL ARTS**

Welcome to the Faculty of Arts and Creative Industries. We are a creative community, led by practitioners in the creative industries, who inspire and challenge our students in a friendly, inclusive and practice-led environment.

Our teaching is underpinned by scholarship, innovative pedagogy, and leading research of national and international significance. In a broad and exciting portfolio of programmes ranging from Animation to Journalism, Fine Art to Digital Media, we emphasise creativity, interdisciplinary study, practical experience and the interrelation of practice and theory alongside the development of specialist and transferable skills, preparing graduates for work in the contemporary creative industries.

Our industry-standard facilities enable students and researchers to shape their disciplines using the most relevant equipment and technology, with full technical support. Collaboration is encouraged and supported at every level, across disciplines, organisations, structures and cultures.

We are committed to putting our students first, by providing them with a creative environment that will prepare them for successful careers in their fields and will develop their critical thinking through doing and making.

For Interior Architecture, please check out our Magazine by clicking [here](#) and you can follow us on [Instagram](#).



ART AND DESIGN



BA 3D ANIMATION AND GAMES

Academic Year 22/23 – Year 2 (Level 5)

Full Year Exchange

90 Credits (45 ECTS)	VCD2501	Animation Practice and Creative Workshops
30 Credits (15 ECTS)	VCD2502	Animation and Digital Cultures



BA ANIMATION

Academic Year 22/23 – Year 2 (Level 5)

Full Year Exchange

90 Credits (45 ECTS)	VCD2501	Animation Practice and Creative Workshops
30 Credits (15 ECTS)	VCD2502	Animation and Digital Cultures



BA FASHION AND COMMUNICATION STYLING

Academic Year 22/23 – Year 2 (Level 5)

Full Year Exchange

30 Credits (15 ECTS)	FSH2320	Fashion Communication Internship
30 Credits (15 ECTS)	FSH2620	Fashion Communication Practice
30 Credits (15 ECTS)	FSH2935	Fashion Culture and Industry
30 Credits (15 ECTS)	FSH2920	Industry, Media and Audience



BA FASHION DESIGN

Academic Year 22/223 – Year 2 (Level 5)

Full Year Exchange

30 Credits (15 ECTS)	FSH2210	Menswear Design
30 Credits (15 ECTS)	FSH2710	Fashion Design Internship
30 Credits (15 ECTS)	FSH2935	Fashion Culture and Industry
30 Credits (15 ECTS)	FSH2910	Fashion Industry Project



BA FASHION TEXTILES AND DESIGN

Academic Year 22/23- Year 2 (Level 5)		Full Year Exchange
30 Credits (15 ECTS)	FSH2030	Developing Fashion and Textiles Design
30 Credits (15 ECTS)	FSH2040	Fashion Textiles and Design in Context
30 Credits (15 ECTS)	FSH2050	Fashion Textiles and Design Industry Practice
30 Credits (15 ECTS)	FSH2935	Fashion Culture and Industry



BA GRAPHIC DESIGN

Academic Year 22/23 - Year 2 (Level 5)		Full Year Exchange
60 Credits (30 ECTS)	GDN2000	Graphic Design Practice
30 Credits (15 ECTS)	GDN2001	Graphic Design Communication Workshops
30 Credits (15 ECTS)	GDN2002	Graphic Design Cultures



BA PHOTOGRAPHY

Academic Year 22/23- Year 2 (Level 5)		Full Year Exchange
30 Credits (15 ECTS)	PHO2001	Photography: Editorial Practice
30 Credits (15 ECTS)	PHO2003	Photography: Social Practice
30 Credits (15 ECTS)	PHO2004	The Critical Image
30 Credits (15 ECTS)	PHO2002	Photography: Concept and Development



BA ILLUSTRATION

Academic Year 22/23 - Year 2 (Level 5)		Full Year Exchange
60 Credits (30 ECTS)	ILN2000	Illustration Practice
60 Credits (30 ECTS)	ILN2001	Illustration: Collaborations, Collectives, Research & Professional Development



BA FINE ART*

Academic Year 22/23 – Year 2 (Level 5)

Full Year Exchange

30 Credits (15 ECTS)	FNA2530	Professional Development and Reflection
90 Credits (45 ECTS)	FNA2590	Developing Practice and Theory



BA INTERIOR ARCHITECTURE*

Academic Year 22/23 – Year 2 (Level 5)

Full Year Exchange

30 Credits (15 ECTS)	IAD2110	Developing Contexts and Skills
30 Credits (15 ECTS)	IAD2120	Developing Practice
60 Credits (30 ECTS)	IAD2240	Interior Architecture Application



BA INTERIOR DESIGN

Academic Year 22/23 – Year 2 (Level 5)

Full Year Exchange

30 Credits (15 ECTS)	IAD2110	Developing Contexts and Skills
30 Credits (15 ECTS)	IAD2120	Developing Practice
60 Credits (30 ECTS)	IAD2230	Interior Design Application

* Available for Semester 2 exchange, please see page 37

CREATIVE WRITING AND MEDIA COURSES



ADVERTISING, PUBLIC RELATIONS AND BRANDING

Academic Year 22/23 – Year 2 (Level 5)		Full Year Exchange
30 Credits (15 ECTS)	APM2000	Understanding Consumer Culture
30 Credits (15 ECTS)	APM2001	Brand Management
30 Credits (15 ECTS)	APM2002	Campaign Planning
Choose 1 module from list below		
30 Credits (15 ECTS)	APM2051	Promotional Cultures
30 Credits (15 ECTS)	APM2250	Promotional Video Production



BA CREATIVE WRITING AND JOURNALISM

Academic Year 22/23 – Year 2 (Level 5)		Full Year Exchange
30 Credits (15 ECTS)	JCM2301	Multimodal Journalism
Choose 3 modules from list below		
30 Credits (15 ECTS)	CMW2013	Screenwriting For Shorts
30 Credits (15 ECTS)	CMW2014	Fiction: The Short Story
30 Credits (15 ECTS)	CMW2015	Storytelling For Games
30 Credits (15 ECTS)	JCM2302	Arts, Lifestyle and Sports Journalism
30 Credits (15 ECTS)	JCM2303	Political Communication



BA DIGITAL MEDIA

Academic Year 22/23 – Year 2 (Level 5)		Full Year Exchange
30 Credits (15 ECTS)	DME2001	Digital Media Research Methods
30 Credits (15 ECTS)	DME2002	Digital Media Practice
30 Credits (15 ECTS)	DME2200	Digital Cultures
Choose 1 module from list below		
30 Credits (15 ECTS)	DME2005	Storytelling for Games
30 Credits (15 ECTS)	DME2051	Visual Cultures

CINEMATICS AND GAMES COURSES



BA VISUAL EFFECTS*

Academic Year 22/23 – Year 2 (Level 5)		Full Year Exchange
30 Credits (15 ECTS)	VFX2010	Creature Effects
30 Credits (15 ECTS)	VFX2020	Procedural Effects
30 Credits (15 ECTS)	VFX2030	Rendering and Compositing

The more practical modules are, a more interesting experience for exchange students. The module VFX2040 is less interesting for students looking to experience our project-based culture.

BA GAMES DESIGN



Academic Year 22/23 – Year 2 (Level 5)		Full Year Exchange
30 Credits (15 ECTS)	GAM2002	Advanced Creative Technologies Workshop 1
30 Credits (15 ECTS)	GAM2004	Digital Cultures
30 Credits (15 ECTS)	GAM2005	Storytelling for Games
30 Credits (15 ECTS)	GAM2003	Advanced Creative Technologies Workshop 2

We accept Erasmus/Exchange students only for Year 1 (Level 4) and Year 2 (Level 5) modules. Any students wishing to take GAM2003 need to also do GAM2002.

You must submit a portfolio.

* Year 3 (Level 6) modules are not available



BSc GAMES DESIGN

Academic Year 22/23 – Year 2 (Level 5)		Full Year Exchange
30 Credits (15 ECTS)	GAM2002	Advanced Creative Technologies Workshop 1
30 Credits (15 ECTS)	GAM2004	Digital Cultures
30 Credits (15 ECTS)	GAM2006	Games Technologies
30 Credits (15 ECTS)	GAM2003	Advanced Creative Technologies Workshop 2

We accept Exchange students only for Year 1 (Level 4) and Year 2 (Level 5) modules. Any students wishing to take GAM2003 need to also do GAM2002.

You must submit a portfolio.

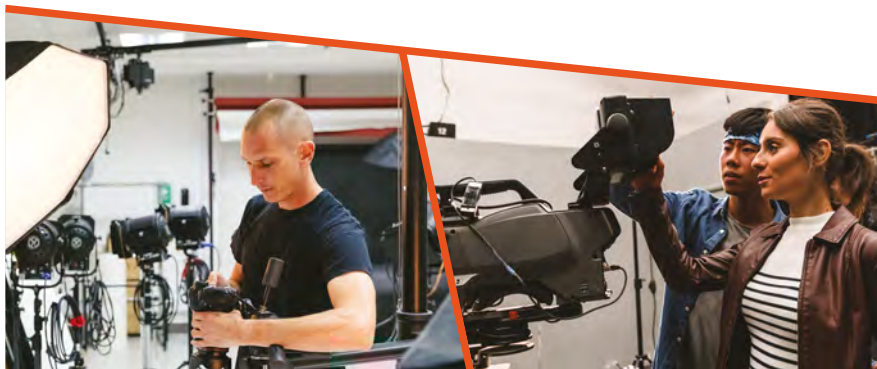
BA FILM

Academic Year 22/23 – Year 2 (Level 5)		Full Year Exchange
60 Credits (30 ECTS)	FLM2300	Producing and Directing
Choose 2 modules from list below		
30 Credits (15 ECTS)	FLM2100	Screenwriting: The Short Film
30 Credits (15 ECTS)	FLM2200	Film Craft
30 Credits (15 ECTS)	FLM2400	Film Documentary

Available for Semester 1 exchange only for students take FLM2100, FLM2400, FLM1300 (Level 4 module), and/or the first term of FLM2300.

You must submit a portfolio.

* Year 3 (Level 6) modules are not available



PERFORMING ARTS



BA DANCE

Academic Year 22/23 – Year 2 (Level 5)

Semester 1 Exchange ONLY

60 Credits (15 ECTS)	DAN2111	Negotiated learning module
----------------------	---------	----------------------------



BA THEATRE PERFORMANCE AND PRODUCTION

Academic Year 22/23 – Year 2 (Level 5)

Full Year Exchange

30 Credits (15 ECTS)	THE2005	Theatre Industry: Applied Practices
----------------------	---------	-------------------------------------

30 Credits (15 ECTS)	THE2025	The Performer and Director
----------------------	---------	----------------------------

30 Credits (15 ECTS)	THE2525	Performance Project
----------------------	---------	---------------------

Choose 1 module from list below

30 Credits (15 ECTS)	THE2030	The Scenographer
----------------------	---------	------------------

30 Credits (15 ECTS)	THE2035	The Solo Performer
----------------------	---------	--------------------

30 Credits (15 ECTS)	THE2040	The Writer and Dramaturg
----------------------	---------	--------------------------



BA THEATRE DESIGN AND PRODUCTION

Academic Year 22/23 – Year 2 (Level 5)

Full Year Exchange

30 Credits (15 ECTS)	THE2005	Theatre Industry: Applied Practices
----------------------	---------	-------------------------------------

30 Credits (15 ECTS)	THE2030	The Scenographer
----------------------	---------	------------------

30 Credits (15 ECTS)	THE2526	Design Project
----------------------	---------	----------------

Choose 1 module from list below

30 Credits (15 ECTS)	THE2045	Creative Collaborations
----------------------	---------	-------------------------

30 Credits (15 ECTS)	THE2025	The Performance and The Director
----------------------	---------	----------------------------------

30 Credits (15 ECTS)	THE2040	The Writer and Dramaturg
----------------------	---------	--------------------------

BA MUSIC

Academic Year 22/23 – Year 2 (Level 5)

Full Year Exchange

30 Credits (15 ECTS)	MUS2010	Composition Songwriting & Arranging
30 Credits (15 ECTS)	MUS2012	Musicianship and Performance
30 Credits (15 ECTS)	MUS2013	Recording and Production
30 Credits (15 ECTS)	MUS2014	Popular Music in the 21st Century
30 Credits (15 ECTS)	MUS2015	Music and Culture
30 Credits (15 ECTS)	MUS2016	The New Business of Music
30 Credits (15 ECTS)	MUS2017	Style and Theory
30 Credits (15 ECTS)	MUS2018	Live Interactive Sound and Synth

BA TELEVISION AND DIGITAL PRODUCTION

Academic Year 22/23 – Year 2 (Level 5)

Full Year Exchange

30 Credits (15 ECTS)	TDP2000	Producing and Directing for TV
30 Credits (15 ECTS)	TDP2100	Multiskilling for Studio & Digital Production

Choose 2 modules from list below

30 Credits (15 ECTS)	TDP2200	Multiskilling for Studio and Digital Production
30 Credits (15 ECTS)	TDP2300	Drama, Doc & Reality TV
30 Credits (15 ECTS)	TDP4000	Promotional Video

* Available for Semester exchange, please see page 21.
The are modules are stated as Term 1 and Term 2.



FACULTY OF ARTS AND CREATIVE INDUSTRIES

UNDERGRADUATE SEMESTER EXCHANGE



BA FINE ART

Academic Year 22/23 – Year 2 (Level 5)

Term 2

60 Credits (30 ECTS)

FNA2061

Fine Art Practice and Development

FACULTY OF ARTS AND CREATIVE INDUSTRIES

POSTGRADUATE SEMESTER EXCHANGE



MA FINE ART

Academic Year 22/23 – Level 7

Term 1

30 Credits (15 ECTS)

ART4200

Developing Practice

30 Credits (15 ECTS)

ART4001

Critical Debates

Term 2

30 Credits (15 ECTS)

ART4002

Advanced Research

30 Credits (15 ECTS)

ART4013

Studio and Exhibition

* Available for Semester 2 as this programme is a January Start. You will start in January 2022. Term 1 is from January to April.



FACULTY OF PROFESSIONAL AND SOCIAL SCIENCE



This Faculty of Professional and Social Sciences groups together subjects from the Business School, School of Law and the School of School of Health and Education.

With strong links with businesses and public sector bodies, the Faculty provides practical real-world learning that prepares students to become change makers and to create and share their knowledge between the professional and academic worlds.

Business School have been building effective relationships is essential for any business, whether it is with customers, clients or organisations. From lifelong associations with our students and alumni to facilitating networks between the professional and academic worlds, Middlesex University Business School brings people together to create and share knowledge and experience. We introduced the UK's first business degree over 50 years ago and have been inspiring students ever since. During this time our bonds with professional bodies, SMEs and multinational companies have allowed us to not only develop with partner organisations but impact upon them through our research and expertise.

School of Law is internationally recognised for its innovative approach to teaching. The School brings together a range of diverse subjects and develops multi-skilled professionals who strive for social justice. From law to politics to policing, criminology to sociology and through the lens of law and international relations, we explore the factors that inhibit equality of opportunity and impact the human experience. We are critical in our approach, and we believe in empowering students to be agents of change in society. The intellectual and

practical skills, contemporary knowledge, work experience and global perspective we offer will leave you poised to pursue a range of rewarding careers worldwide.

The School of Health and Education offers exciting and wide-ranging undergraduate courses in education and teaching, health and social work based on foundations of excellent scholarship, research and practice-based learning. Working in partnership is fundamental to everything that we do in the School of Health and Education; we could not achieve the things we do if we worked in isolation. Our aim is to support our students, staff and partners to achieve their full potential and, in so doing, make a difference in the world.

We take an innovative approach to developing highly-skilled professionals able to transform people's lives through their work in education, interpreting and translation, nursing, midwifery, mental health, social work and integrative medicine. Partnering with a variety of schools, education settings, charitable, private and public sector organisations, we have a history of pioneering excellence that is recognised worldwide.

BUSINESS SCHOOL**ACCOUNTING AND FINANCE COURSES****BA ACCOUNTING AND FINANCE**

Academic Year 22/23 – Year 2 (Level 5)		Full Year Exchange
30 Credits (15 ECTS)	LAW2130	Business Law
Choose 2 modules from lists below		
30 Credits (15 ECTS)	ACC2830	Financial Project Management
30 Credits (15 ECTS)	FIN2840	Personal Financial Behaviour
30 Credits (15 ECTS)	MGT2222	Operations Management
30 Credits (15 ECTS)	MSO2620	Financial Mathematics
You must choose 1 module from list below		
30 Credits (15 ECTS)	ACC2125	Advanced Management Accounting
30 Credits (15 ECTS)	ACC2820	Applied Management Accounting
OR You can only choose 1 module from list below		
30 Credits (15 ECTS)	ACC2120	Advanced Financial Accounting
30 Credits (15 ECTS)	ACC2810	Applied Financial Accounting

**BSc BANKING AND FINANCE**

Academic Year 22/23 – Year 2 (Level 5)		Full Year Exchange
30 Credits (15 ECTS)	ECS2380	Banking Theory and Practice
30 Credits (15 ECTS)	FIN2150	Securities and Derivatives
30 Credits (15 ECTS)	MSO2620	Financial Mathematics
Choose 1 module from list below		
30 Credits (15 ECTS)	ACC2810	Applied Financial Accounting
30 Credits (15 ECTS)	FIN2840	Personal Financial Behaviour

**BSc BUSINESS ACCOUNTING**

Academic Year 22/23 – Year 2 (Level 5)		Full Year Exchange
30 Credits (15 ECTS)	ACC2810	Applied Financial Accounting
30 Credits (15 ECTS)	ACC2820	Applied Management Accounting
30 Credits (15 ECTS)	ACC2830	Financial Project Management
Choose 1 module from list below		
30 Credits (15 ECTS)	FIN2840	Personal Financial Behaviour
30 Credits (15 ECTS)	HRM2118	Human Resource Management in Practice
30 Credits (15 ECTS)	LAW2130	Business Law
30 Credits (15 ECTS)	MSO2620	Financial Mathematics

BUSINESS AND MANAGEMENT COURSES



BA BUSINESS MANAGEMENT

Academic Year 22/23 – Year 2 (Level 5)		Full Year Exchange
15 Credits (7.5 ECTS)	BIS2018	Management Information Systems
30 Credits (15 ECTS)	MGT2221	Operations Management
15 Credits (7.5 ECTS)	MGT2311	Business Environment
15 Credits (7.5 ECTS)	HRM2018	Organisational Behaviour
15 Credits (7.5 ECTS)	MGT2321	Principles of Innovation and Entrepreneurship
Choose 1 module from list below		
30 Credits (15 ECTS)	ACC2222	Accounting and Finance for Business
30 Credits (15 ECTS)	ECS2290	Trade and International Business
30 Credits (15 ECTS)	HRM2118	Human Resource Management in Practice
30 Credits (15 ECTS)	LAW2130	Business Law
30 Credits (15 ECTS)	MKT2001	Marketing Research and Insights



BA BUSINESS MANAGEMENT (FINANCE)

Academic Year 22/23 – Year 2 (Level 5)		Full Year Exchange
30 Credits (15 ECTS)	ACC2222	Accounting and Finance for Business
15 Credits (7.5 ECTS)	BIS2018	Management Information Systems
30 Credits (15 ECTS)	MGT2222	Operations Management
15 Credits (7.5 ECTS)	MGT2316	Business Environment
15 Credits (7.5 ECTS)	HRM2018	Organisational Behaviour
15 Credits (7.5 ECTS)	MGT2326	Principles of Innovation and Entrepreneurship



BA BUSINESS MANAGEMENT (Innovation and Entrepreneurship)

Academic Year 22/23 – Year 2 (Level 5)

Full Year Exchange

15 Credits (7.5 ECTS)	BIS2018	Management Information Systems
30 Credits (15 ECTS)	MGT2222	Operations Management
15 Credits (7.5 ECTS)	MGT2313	Business Environment
15 Credits (7.5 ECTS)	HRM2018	Organisational Behaviour
15 Credits (7.5 ECTS)	MGT2323	Principles of Innovation and Entrepreneurship

Choose 1 module from list below

30 Credits (15 ECTS)	ACC2222	Accounting and Finance for Business
30 Credits (15 ECTS)	ECS2290	Trade and International Business
30 Credits (15 ECTS)	HRM2118	Human Resource Management in Practice
30 Credits (15 ECTS)	LAW2130	Business Law
30 Credits (15 ECTS)	MKT2001	Marketing Research and Insights



BA BUSINESS MANAGEMENT (Project Management)

Academic Year 22/23 – Year 2 (Level 5)

Full Year Exchange

15 Credits (7.5 ECTS)	BIS2018	Management Information Systems
30 Credits (15 ECTS)	MGT2222	Operations Management
15 Credits (7.5 ECTS)	MGT2313	Business Environment
15 Credits (7.5 ECTS)	HRM2018	Organisational Behaviour
15 Credits (7.5 ECTS)	MGT2323	Principles of Innovation and Entrepreneurship

Choose 1 module from list below

30 Credits (15 ECTS)	ACC2222	Accounting and Finance for Business
30 Credits (15 ECTS)	ECS2290	Trade and International Business
30 Credits (15 ECTS)	HRM2118	Human Resource Management in Practice
30 Credits (15 ECTS)	LAW2130	Business Law
30 Credits (15 ECTS)	MKT2001	Marketing Research and Insights



BA BUSINESS MANAGEMENT (Supply Chain Logistics)

Academic Year 22/23 – Year 2 (Level 5)

Full Year Exchange

15 Credits (7.5 ECTS)	BIS2018	Management Information Systems
30 Credits (15 ECTS)	MGT2222	Operations Management
15 Credits (7.5 ECTS)	MGT2313	Business Environment
15 Credits (7.5 ECTS)	HRM2018	Organisational Behaviour
15 Credits (7.5 ECTS)	MGT2323	Principles of Innovation and Entrepreneurship

Choose 1 module from list below

30 Credits (15 ECTS)	ACC2222	Accounting and Finance for Business
30 Credits (15 ECTS)	ECS2290	Trade and International Business
30 Credits (15 ECTS)	HRM2118	Human Resource Management in Practice
30 Credits (15 ECTS)	LAW2130	Business Law
30 Credits (15 ECTS)	MKT2001	Marketing Research and Insights



BA INTERNATIONAL BUSINESS

Academic Year 22/23 – Year 2 (Level 5)

Full Year Exchange

30 Credits (15 ECTS)	ECS2290	Trade and International Business
15 Credits (7.5 ECTS)	MGT2010	International Business Environment
15 Credits (7.5 ECTS)	MGT2012	Global Organisations
15 Credits (7.5 ECTS)	HRM2017	International Human Resource Management
15 Credits (7.5 ECTS)	MGT2011	Operations and Information Management

Choose 1 module from list below

30 Credits (15 ECTS)	ACC2222	Accounting and Finance for Business
30 Credits (15 ECTS)	LAW2130	Business Law
30 Credits (15 ECTS)	MGT2014	International Entrepreneurship



ECONOMICS COURSES



BSc ECONOMICS

Academic Year 22/23 – Year 2 (Level 5)		Full Year Exchange
30 Credits (15 ECTS)	ECS2001	Microeconomics
30 Credits (15 ECTS)	ECS2002	Macroeconomics
30 Credits (15 ECTS)	ESC2003	Econometrics
30 Credits (15 ECTS)	ECS2004	Quantitative Techniques 2



BSc ECONOMICS (Financial Economics)

Academic Year 22/23 – Year 2 (Level 5)		Full Year Exchange
30 Credits (15 ECTS)	ECS2001	Microeconomics
30 Credits (15 ECTS)	ECS2002	Macroeconomics
30 Credits (15 ECTS)	ESC2003	Econometrics
30 Credits (15 ECTS)	ECS2004	Quantitative Techniques 2



BSc BUSINESS ECONOMICS

Academic Year 22/23 – Year 2 (Level 5)		Full Year Exchange
30 Credits (15 ECTS)	ACC2222	Accounting and Finance for Business
30 Credits (15 ECTS)	ECS2007	Economic Policy & Analysis
30 Credits (15 ECTS)	ECS2290	Trade and International Business
30 Credits (15 ECTS)	ECS2380	Banking Theory and Practice

HUMAN RESOURCE MANAGEMENT COURSES



BA BUSINESS MANAGEMENT (Human Resource Management)

Academic Year 22/23 – Year 2 (Level 5)		Full Year Exchange
15 Credits (7.5 ECTS)	BIS2018	Management Information Systems
30 Credits (15 ECTS)	HRM2118	Human Resource Management in Practice
30 Credits (15 ECTS)	MGT2222	Operations Management
15 Credits (7.5 ECTS)	MGT2311	Business Environment
15 Credits (7.5 ECTS)	HRM2018	Organisational Behaviour
15 Credits (7.5 ECTS)	MGT2321	Principles of Innovation and Entrepreneurship



MARKETING COURSES



BA BUSINESS MANAGEMENT (Marketing)

Academic Year 22/23 – Year 2 (Level 5)		Full Year Exchange
15 Credits (7.5 ECTS)	BIS2018	Management Information Systems
30 Credits (15 ECTS)	MGT2222	Operations Management
15 Credits (7.5 ECTS)	MGT2315	Business Environment
15 Credits (7.5 ECTS)	HRM2018	Organisational Behaviour
15 Credits (7.5 ECTS)	MGT2325	Principles of Innovation and Entrepreneurship
Choose 1 module from list below		
30 Credits (15 ECTS)	MKT2001	Marketing Research and Insights
30 Credits (15 ECTS)	MKT2002	Digital Marketing Strategy



BA MARKETING

Academic Year 22/23 – Year 2 (Level 5)		Full Year Exchange
30 Credits (15 ECTS)	MKT2001	Marketing Research and Insights
30 Credits (15 ECTS)	MKT2002	Digital Marketing Strategy
15 Credits (7.5 ECTS)	MKT2003	Brand Management
15 Credits (7.5 ECTS)	MKT2004	Content Marketing and Media Editing
You must Choose 1 modules from list below for Term 1		
15 Credits (7.5 ECTS)	MKT2005	New Product Development and Innovation
15 Credits (7.5 ECTS)	MKT2008	Advertising and Sales Promotion
You must Choose 1 module from list below for Term 2		
15 Credits (7.5 ECTS)	MKT2006	Customer Engagement Marketing
15 Credits (7.5 ECTS)	MKT2007	Entrepreneurial Marketing

TOURISM AND HOSPITALITY MANAGEMENT COURSES



BSc INTERNATIONAL TOURISM MANAGEMENT

Academic Year 22/23 – Year 2 (Level 5)		Full Year Exchange
30 Credits (15 ECTS)	TOU2011	Contemporary Tourism Management
15 Credits (7.5 ECTS)	TOU2013	Research People and Places
15 Credits (7.5 ECTS)	TOU2014	Experiential Learning in the Field
Term 1: You must Choose 2 modules from list below		
15 Credits (7.5 ECTS)	TOU2015	Responsible Tourism Management
15 Credits (7.5 ECTS)	TOU2018	Tourism Enterprise and Tourism Management
15 Credits (7.5 ECTS)	TOU2019	Tourism Business
15 Credits (7.5 ECTS)	TOU2022	Tourism Languages
Term 2: You must Choose 2 modules from list below		
15 Credits (7.5 ECTS)	TOU2016	Emerging Market: China and Latin America
15 Credits (7.5 ECTS)	TOU2017	Consulting Project in Tourism
15 Credits (7.5 ECTS)	TOU2023	Aviation and Passenger Transport Management



BA INTERNATIONAL TOURISM MANAGEMENT (Mandarin)

Academic Year 22/23 – Year 2 (Level 5)		Full Year Exchange
15 Credits (7.5 ECTS)	MCH2011	Business Communication in Mandarin 1
30 Credits (15 ECTS)	TOU2011	Contemporary Tourism Management
15 Credits (7.5 ECTS)	TOU2013	Research People and Places
15 Credits (7.5 ECTS)	MCH2012	Business Communication in Mandarin 2
15 Credits (7.5 ECTS)	TOU2014	Experiential Learning in the Field
You must Choose 1 modules from list below for Term 1		
15 Credits (7.5 ECTS)	MCH2003	Mandarin, Culture and Society 1
15 Credits (7.5 ECTS)	TOU2018	Tourism Enterprise and Tourism Management
15 Credits (7.5 ECTS)	TOU2019	Tourism Business
15 Credits (7.5 ECTS)	TOU2022	Tourism Languages
You must Choose 1 modules from list below for Term 2		
15 Credits (7.5 ECTS)	TOU2016	Emerging Market: China and Latin America
15 Credits (7.5 ECTS)	MCH2004	Mandarin, Culture and Society 2
15 Credits (7.5 ECTS)	TOU2023	Aviation and Passenger Transport Management

*Modules chosen are not guaranteed, this is subject to timetable. Modules MCH2003 and MCH2004 are for Mandarin Intermediate Level only.



BA INTERNATIONAL TOURISM MANAGEMENT (Spanish)

Academic Year 22/23 – Year 2 (Level 5)		Full Year Exchange
30 Credits (15 ECTS)	TOU2011	Contemporary Tourism Management
15 Credits (7.5 ECTS)	TOU2013	Research People and Places
15 Credits (7.5 ECTS)	TOU2014	Experiential Learning in the Field
You must Choose 1 modules from list below for Term 1		
15 Credits (7.5 ECTS)	TOU2015	Responsible Tourism Management
15 Credits (7.5 ECTS)	TOU2018	Tourism Enterprise and Tourism Management
15 Credits (7.5 ECTS)	TOU2019	Tourism Business
15 Credits (7.5 ECTS)	TOU2022	Tourism Languages
You must Choose 1 module from list below for Term 2		
15 Credits (7.5 ECTS)	TOU2016	Emerging Market: China and Latin America
15 Credits (7.5 ECTS)	TOU2017	Consulting Project in Tourism
15 Credits (7.5 ECTS)	TOU2023	Aviation and Passenger Transport Management

BUSINESS SCHOOL POSTGRADUATE SEMESTER EXCHANGE



MSC APPLIED BEHAVIOURAL ECONOMICS

Academic Year 22/23 – Year 2 (Level 5)		
30 Credits (15 ECTS)	ECS4011	Fundamentals of Behavioural Economics
15 Credits (7.5 ECTS)	EC4002	Data Analysis

SCHOOL OF LAW



BA INTERNATIONAL POLITICS*

Academic Year 22/23 – Year 2 (Level 5)

Full Year Exchange

30 Credits (15 ECTS)	POI2001	Theories of International Relations
30 Credits (15 ECTS)	POI2100	Global Political Economy



BA INTERNATIONAL POLITICS AND LAW*

Academic Year 22/23 – Year 2 (Level 5)

Full Year Exchange

30 Credits (15 ECTS)	POI2001	Theories of International Relations
30 Credits (15 ECTS)	LAW2465	UK and European Human Rights Law
30 Credits (15 ECTS)	LAW2420	Equality and the Law
30 Credits (15 ECTS)	LAW2334	Jurisprudence
30 Credits (15 ECTS)	LAW2914	EU Internal Market Law



BA INTERNATIONAL POLITICS, ECONOMICS AND LAW*

Academic Year 22/23 – Year 2 (Level 5)

Full Year Exchange

30 Credits (15 ECTS)	POI2001	Theories of International Relations
30 Credits (15 ECTS)	LAW2465	UK and European Human Rights Law
30 Credits (15 ECTS)	LAW2420	Equality and the Law
30 Credits (15 ECTS)	LAW2334	Jurisprudence
30 Credits (15 ECTS)	LAW2914	EU Internal Market Law
30 Credits (15 ECTS)	ECS2007	Economic Policy and Analysis
30 Credits (15 ECTS)	ECS2290	Trade and International Business

*please choose 2 modules from the list and then refer to Page 39 and 40 for module options for Autumn and Winter





BA (HONS) LAW

Academic Year 22/23 – Year 2 (Level 5)		Full Year Exchange
30 Credits (15 ECTS)	LAW2416	Civil and Criminal Liability
30 Credits (15 ECTS)	LAW2420	Equality and the Law
30 Credits (15 ECTS)	LAW2914	EU Internal Market Law
Choose 1 module from the list below		
30 Credits (15 ECTS)	LAW2951	English and International Commercial Law
30 Credits (15 ECTS)	LAW2334	Jurisprudence
30 Credits (15 ECTS)	LAW2465	UK and European Human Rights Law



LLB LAW

Academic Year 22/23 – Year 2 (Level 5)		Full Year Exchange
30 Credits (15 ECTS)	LAW2101	Criminal Law
30 Credits (15 ECTS)	LAW2105	Tort Law
30 Credits (15 ECTS)	LAW2110	EU Law
Choose 1 module from the list below		
30 Credits (15 ECTS)	LAW2915	English and International Commercial Law
30 Credits (15 ECTS)	LAW2224	Jurisprudence
30 Credits (15 ECTS)	LAW2464	UK and European Human Rights Law



LLB COMMERCIAL LAW

Academic Year 22/23 – Year 2 (Level 5)		Full Year Exchange
30 Credits (15 ECTS)	LAW2101	Criminal Law
30 Credits (15 ECTS)	LAW2105	Tort
30 Credits (15 ECTS)	LAW2110	EU Law
30 Credits (15 ECTS)	LAW2915	English and International Commercial Law



LLB LAW WITH HUMAN RIGHTS

Academic Year 22/23 – Year 2 (Level 5)		Full Year Exchange
30 Credits (15 ECTS)	LAW2101	Criminal Law
30 Credits (15 ECTS)	LAW2105	Tort
30 Credits (15 ECTS)	LAW2110	EU Law
30 Credits (15 ECTS)	LAW2464	UK and European Human Rights Law

*LAW modules availability of some of the modules may be subject to change



LLB LAW WITH INTERNATIONAL RELATIONS

Academic Year 22/23 – Year 2 (Level 5)		Full Year Exchange
30 Credits (15 ECTS)	LAW2101	Criminal Law
30 Credits (15 ECTS)	LAW2105	Tort
30 Credits (15 ECTS)	LAW2110	EU Law
30 Credits (15 ECTS)	POI2001	Theories of International Relations



BA CRIMINOLOGY*

Academic Year 22/23 – Year 2 (Level 5)		Term 1
15 Credits (7.5 ECTS)	CRM2270	Contemporary Criminological Theory
15 Credits (7.5 ECTS)	CRM2271	Transforming Justice: Human Rights and Power in Contemporary Criminological Policy and Practice
15 Credits (7.5 ECTS)	CRM2273	Policing
15 Credits (7.5 ECTS)	CRM2274	Prisons and Penology
15 Credits (7.5 ECTS)	CRM2275	Criminal Law and Legal Processes
		Term 2
15 Credits (7.5 ECTS)	CRM2272	Criminology and Practice: Working in Criminology
15 Credits (7.5 ECTS)	CRM2277	Victimology
15 Credits (7.5 ECTS)	CRM2278	Gender and Crime
15 Credits (7.5 ECTS)	CRM2279	Youth, Crime and Justice
15 Credits (7.5 ECTS)	CRM2280	Cybercrime in Contemporary Criminology

*Available for Full Academic Year Exchange and Semester Exchange





BA SOCIOLOGY*

Academic Year 22/23 – Year 2 (Level 5)		Long-Year Module
30 Credits (15 ECTS)	SOC2270	Research Methods for Studying Contemporary Society
		Term 1
15 Credits (7.5 ECTS)	SOC2271	Sociological Theory
15 Credits (7.5 ECTS)	SOC2273	Sociology of Intimate and Personal Lives: Family, Friendship and Self
15 Credits (7.5 ECTS)	SOC2274	Religion, Self and Society
15 Credits (7.5 ECTS)	SOC2275	Digital Media and the Social World
		Term 2
15 Credits (7.5 ECTS)	SOC2272	Sociology and Social Change
15 Credits (7.5 ECTS)	SOC2276	Race and Social Justice
15 Credits (7.5 ECTS)	SOC2277	Our Social World: Work, Care, Education and Housing in Contemporary Britain
15 Credits (7.5 ECTS)	SOC2278	Cities and Communities



BA SOCIOLOGY WITH CRIMINOLOGY*

Academic Year 22/23 – Year 2 (Level 5)		Long-Year Module
30 Credits (15 ECTS)	SOC2270	Research Methods for Studying Contemporary Society
		Term 1
15 Credits (7.5 ECTS)	SOC2271	Sociological Theory
15 Credits (7.5 ECTS)	CRM2271	Transforming Justice: Human Rights and Power in Contemporary Criminological Policy and Practice
15 Credits (7.5 ECTS)	SOC2273	Sociology of Intimate and Personal Lives: Family, Friendship and Self
15 Credits (7.5 ECTS)	SOC2274	Religion, Self and Society
15 Credits (7.5 ECTS)	SOC2275	Digital Media and the Social World
		Term 2
15 Credits (7.5 ECTS)	SOC2272	Sociology and Social Change
15 Credits (7.5 ECTS)	SOC2276	Race and Social Justice
15 Credits (7.5 ECTS)	SOC2277	Our Social World: Work, Care, Education and Housing in Contemporary Britain
15 Credits (7.5 ECTS)	SOC2278	Cities and Communities

*available for Full Academic Year Exchange and Semester Exchange

SCHOOL OF LAW

UNDERGRADUATE SEMESTER EXCHANGE



BA INTERNATIONAL POLITICS

Academic Year 22/23 – Year 2 (Level 5)		Term 1 – Autumn
15 Credits (7.5 ECTS)	POI2301	Comparative Political Systems
15 Credits (7.5 ECTS)	POI2305	Politics of Climate Change
15 Credits (7.5 ECTS)	POI2306	Gender, Power and Global Politics
15 Credits (7.5 ECTS)	POI2303	Research Design, Theories and Concepts: Analysing Political Discourse
		Term 2 – Winter
15 Credits (7.5 ECTS)	POI2030	Regions and Regionalism in the Global South and Eurasia
15 Credits (7.5 ECTS)	POI2302	Political Systems in Comparison
15 Credits (7.5 ECTS)	POI2304	Constructing Knowledge for Politics
15 Credits (7.5 ECTS)	POI2307	Social Movements in an International Context



BA INTERNATIONAL POLITICS AND LAW

Academic Year 22/23 – Year 2 (Level 5)		Term 1 – Autumn
15 Credits (7.5 ECTS)	POI2020	Post-Brexit Europe: Transformation and Challenges
15 Credits (7.5 ECTS)	POI2301	Comparative Political Systems
15 Credits (7.5 ECTS)	POI2305	Politics of Climate Change
15 Credits (7.5 ECTS)	POI2306	Gender, Power and Global Politics
15 Credits (7.5 ECTS)	POI2303	Research Design, Theories and Concepts: Analysing Political Discourse
15 Credits (7.5 ECTS)	POI2103	Theories of Global Political Economy
		Term 2 – Winter
15 Credits (7.5 ECTS)	POI2104	Issue of Global Political Economy
15 Credits (7.5 ECTS)	POI2030	Regions and Regionalism in the Global South and Eurasia
15 Credits (7.5 ECTS)	POI2302	Political Systems in Comparison
15 Credits (7.5 ECTS)	POI2304	Constructing Knowledge for Politics
15 Credits (7.5 ECTS)	POI2307	Social Movements in an International Context



BA INTERNATIONAL POLITICS, ECONOMIC AND LAW

Academic Year 22/23 – Year 2 (Level 5)

Term 1 – Autumn

15 Credits (7.5 ECTS)	POI2020	Post-Brexit Europe: Transformation and Challenges
15 Credits (7.5 ECTS)	POI2301	Comparative Political Systems
15 Credits (7.5 ECTS)	POI2305	Politics of Climate Change
15 Credits (7.5 ECTS)	POI2306	Gender, Power and Global Politics
15 Credits (7.5 ECTS)	POI2303	Research Design, Theories and Concepts: Analysing Political Discourse
15 Credits (7.5 ECTS)	POI2103	Theories of Global Political Economy

Term 2 – Winter

15 Credits (7.5 ECTS)	POI2104	Issue of Global Political Economy
15 Credits (7.5 ECTS)	POI2030	Regions and Regionalism in the Global South and Eurasia
15 Credits (7.5 ECTS)	POI2302	Political Systems in Comparison
15 Credits (7.5 ECTS)	POI2304	Constructing Knowledge for Politics
15 Credits (7.5 ECTS)	POI2307	Social Movements in an International Context

SCHOOL OF LAW

POSTGRADUATE SEMESTER EXCHANGE



MA CRIMINOLOGY

Academic Year 21/22 – Level 7

Term 1

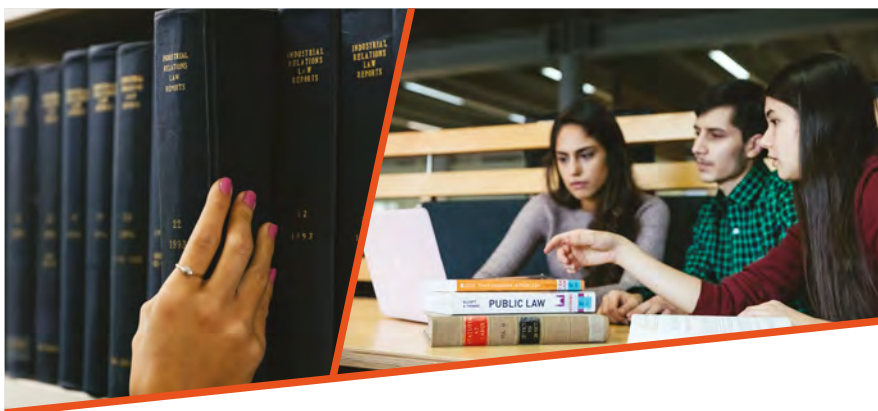
20 Credits (10 ECTS)	CRM4201	Contemporary Theory and Research in Criminology
20 Credits (10 ECTS)	CRM4221	Human Rights and Contemporary Justice
20 Credits (10 ECTS)	CRM4223	Cybercrime and Society
20 Credits (10 ECTS)	CRM4251	Global Criminology and Policing
20 Credits (10 ECTS)	CRM4252	Political Violence and Terrorism
20 Credits (10 ECTS)	CRM4229	Youth Offending, Disorder and Gangs

Term 2

20 Credits (10 ECTS)	CRM4607	Drugs and Crime (Distance Learning Module)
20 Credits (10 ECTS)	CRM4252	Political Violence and Terrorism
20 Credits (10 ECTS)	CRM4203	Psychological Interventions and Approaches to offending
20 Credits (10 ECTS)	CRM4204	Critical Issues in Criminal Justice
20 Credits (10 ECTS)	CRM4209	Interpersonal Violence and Hate Crime
20 Credits (10 ECTS)	CRM4570	Environmental Crime and Green Criminology
20 Credits (10 ECTS)	CRM4225	Regulatory Practices and Policing Cybercrime



Go to the next page for Postgraduate Course LLM



LLM

Academic Year 22/23 – Level 7

Term 1

20 Credits (10 ECTS)	LEX4704	Foundations and Principles of International Law
20 Credits (10 ECTS)	LEX4705	Minority Rights and Indigenous Peoples in International Law
20 Credits (10 ECTS)	LEX4706	English Commercial Law
20 Credits (10 ECTS)	LEX4707	Law of the International Sale of Goods
20 Credits (10 ECTS)	LEX4709	European Human Rights Law and Practice
20 Credits (10 ECTS)	SSC4603	Sustainable Development and Human Rights
20 Credits (10 ECTS)	SSC4606	Environmental Law and Governance

Term 2

20 Credits (10 ECTS)	LEX4141	International Competition Law
20 Credits (10 ECTS)	LEX4708	Law and Policy of the World Trade Organisation
20 Credits (10 ECTS)	LEX4714	International Organisations and International Dispute Resolution
20 Credits (10 ECTS)	LEX4716	International Human Rights Law
20 Credits (10 ECTS)	LEX4720	International Commercial Litigation and Arbitration
20 Credits (10 ECTS)	LEX4723	Business and Human Rights
20 Credits (10 ECTS)	LEX4726	Intellectual Property Law
20 Credits (10 ECTS)	POI4114	Politics of Globalisation

**LEX modules are subject to availability

SCHOOL OF HEALTH AND EDUCATION

EDUCATION STUDIES COURSES



BA EARLY CHILDHOOD STUDIES

Academic Year 22/23 – Year 2 (Level 5)		Full Year Exchange
30 Credits (15 ECTS)	EDU2201	Researching Lives: Social Investigation in the Contemporary World
30 Credits (15 ECTS)	EDU2206	Social Perspectives on Childhood and Education for Early Years
You must choose 2 modules from list below		
30 Credits (15 ECTS)	EDU2303	Comparative Education and Related Issues
30 Credits (15 ECTS)	EDU2307	Curriculum Studies Foundation Stage and Key Stage 1
30 Credits (15 ECTS)	EDU2308	Education and the Social World: Who Educates Whom How and Why?
30 Credits (15 ECTS)	EDU2309	Insights into Play and Pedagogy



BA EDUCATION STUDIES

Academic Year 22/23 – Year 2 (Level 5)		Full Year Exchange
30 Credits (15 ECTS)	EDU2201	Researching Lives: Social Investigation in the Contemporary World
30 Credits (15 ECTS)	EDU2205	Equality, Diversity and Inclusion
You must choose 2 modules from list below		
30 Credits (15 ECTS)	EDU2210	Professional Practice and Leadership in Educational Contexts
30 Credits (15 ECTS)	EDU2303	Comparative Education and Related Issues
30 Credits (15 ECTS)	EDU2308	Education and the Social World: Who Educates Whom How and Why?
30 Credits (15 ECTS)	EDU2309	Insights into Play and Pedagogy
30 Credits (15 ECTS)	EDU2314	Curriculum Studies: Primary Education



BSC PSYCHOLOGY WITH EDUCATION

Academic Year 22/23 – Year 2 (Level 5)		Full Year Exchange
30 Credits (15 ECTS)	PSY2004	Researching Lives: Social Investigation in the Contemporary World
30 Credits (15 ECTS)	PSY2006	Equality, Diversity and Inclusion
30 Credits (15 ECTS)	PSY2007	Social, Personality and Developmental Psychology
Choose 1 module from list below		
30 Credits (15 ECTS)	EDU2205	Equality, Diversity and Inclusion
30 Credits (15 ECTS)	EDU2314	Curriculum Studies: Primary Education



BA PRIMARY EDUCATION

Academic Year 22/23 – Year 2 (Level 5)		Full Year Exchange
15 Credits (7.5 ECTS)	EDP2601	English: Creative Literacies
15 Credits (7.5 ECTS)	EDP2602	Mathematics through stories
10 Credits (5 ECTS)	EDP2603	Investigating Science
10 Credits (5 ECTS)	EDP2604	Physical Education, Health and Well-being
10 Credits (5 ECTS)	EDP2606	Religion and Worldviews
10 Credits (5 ECTS)	EDP2607	Inclusive Practices for Children with SEND
20 Credits (10 ECTS)	EDP2608	Cross Curricular Learning and Teaching

SCHOOL OF HEALTH AND EDUCATION

ADULT, CHILD NURSING, AND MIDWIFERY

In the current climate we are experiencing challenges with the health situation and the role and demand on our nurses. We are working very hard to address and support out health services and of course this means changes to our nursing programmes and also to our placement provision.

For Academic Year 2022/23, we will not be accepting any Nursing and Midwifery nominations due to placement capacity which will potentially will be worse in March onwards.

However, we 'could' support short exchanges but this will need to be looked at in the next academic year.

At this current moment in time, it is too uncertain moving forwards

Social Work and Mental Health courses are not offered to Exchange students as they are professional qualifications.

We would kindly appreciate your understanding during these unprecedented times.

International Mobility Team
Middlesex University



FACULTY OF SCIENCE AND TECHNOLOGY



In the Faculty of Science and Technology, much of our work is guided by the notion that people have an essential part to play in modern engineering and technology. Within our Faculty we are attempting to integrate the study of people, both as individuals and societies, with that of artefacts and the sciences that are involved.

Our Faculty brings together leading academics from a wide variety of backgrounds, working together to ensure that broad perspectives of systems are used, to challenge thinking and formulate approaches to science, engineering, design and analysis that are fit for purpose in our modern world.

The **Department of Natural Sciences** delivers high quality teaching, research and consultancy across several disciplines including biomedical and healthcare sciences, biology, environmental health, environmental and public health, occupational health and safety and risk management. The focus of the department is on the application of knowledge to practice, with that knowledge underpinned by a sound scientific philosophy and research basis.

The **Computer Science Department** aims to equip students with knowledge of the foundations of their chosen subject area and the skills necessary to apply their discipline to real-world problems. Our teaching regularly achieves high satisfaction scores and you will find many of our courses provide a diverse and engaging approach to teaching and learning, including project-based activities in all years, invited speakers and access to leading edge technologies in a range of dedicated labs throughout the campus.

The **Department of Design Engineering and Mathematics** is a renowned centre for the study and application of Product Design and Design Engineering. Design thinking and real-world problem solving are central to our research and teaching ethos, and we are proud to offer courses which immerse our students in practical projects from day one. Our state-of-the-art workshops boast industry standard equipment such as 3D printers and our experienced lab technicians are always available to help our students develop their skills and knowledge.

The **Department of Psychology** is one of the largest providers of Psychology education in the UK. We teach over 10 programmes at the London campus and are responsible for a further 36 joint and validated programmes in collaboration with partner institutions.

The **London Sports Institute** has been built on a range of highly successful and innovative undergraduate programmes offering excellent opportunities for students, enabling them to lead an active and healthy lifestyle during their years of study. Our students are given a high quality grounding in sport and exercise science, which they then develop into professionally-related degrees – for example in sports rehabilitation, sports performance, coaching and teaching sport.

NATURAL SCIENCE DEPARTMENT

BIOSCIENCES COURSES



BSc BIOCHEMISTRY

Academic Year 22/23 – Year 2 (Level 5)		Full Year Exchange
15 Credits (7.5 ECTS)	BIO2556	Molecular Biology
30 Credits (15 ECTS)	BIO2005	Research Methods and Project Planning
30 Credits (15 ECTS)	BIO2400	Functional Biochemistry
15 Credits (7.5 ECTS)	BIO2512	Analytical Techniques
15 Credits (7.5 ECTS)	BIO2413	Immunology and Endocrinology
15 Credits (7.5 ECTS)	BIO2417	Advanced Organic Chemistry I



BSc MEDICAL BIOCHEMISTRY

Academic Year 22/23 – Year 2 (Level 5)		Full Year Exchange
15 Credits (7.5 ECTS)	BIO2556	Molecular Biology
30 Credits (15 ECTS)	BIO2005	Research Methods and Project Planning
30 Credits (15 ECTS)	BIO2400	Functional Biochemistry
15 Credits (7.5 ECTS)	BIO2514	Medical Diagnostic Techniques
15 Credits (7.5 ECTS)	BIO2413	Immunology and Endocrinology
15 Credits (7.5 ECTS)	BIO2419	Pharmaceutical Chemistry



BSc BIOLOGY

Academic Year 22/23 – Year 2 (Level 5)		Full Year Exchange
30 Credits (15 ECTS)	BIO2005	Research Methods and Project Planning
15 Credits (7.5 ECTS)	BIO2566	Phylogenetic Aspects of the Tree of Life
Choose 5 modules from list below		
15 Credits (7.5 ECTS)	BIO2502	Applied Microbiology
15 Credits (7.5 ECTS)	BIO2556	Molecular Biology
15 Credits (7.5 ECTS)	BIO2413	Immunology and Endocrinology
15 Credits (7.5 ECTS)	BIO2607	Biochemistry
15 Credits (7.5 ECTS)	BIO2804	Biodiversity and Ecosystems
15 Credits (7.5 ECTS)	BIO2811	Environmental Monitoring



BSc MEDICAL PHYSIOLOGY

Academic Year 22/23 – Year 2 (Level 5)		Full Year Exchange
30 Credits (15 ECTS)	BMS2075	Research Methods and Professional Development
30 Credits (15 ECTS)	BMS2665	Medical Instrumentation and Imaging
30 Credits (15 ECTS)	BMS2895	Cardiopulmonary Science
30 Credits (15 ECTS)	BMS2955	Neurophysiology



BSc NEUROSCIENCE

Academic Year 22/23 – Year 2 (Level 5)		Full Year Exchange
30 Credits (15 ECTS)	BMS2007	Research Methods and Professional Practice
30 Credits (15 ECTS)	BMS2415	Neuropharmacology
30 Credits (15 ECTS)	BMS2955	Clinical Neurophysiology
30 Credits (15 ECTS)	PSY2006	Brain, Body and Mind

ENVIRONMENTAL, OCCUPATIONAL AND PUBLIC HEALTH COURSES



BSc ENVIRONMENTAL HEALTH

Academic Year 22/23 – Year 2 (Level 5)		Full Year Exchange
30 Credits (15 ECTS)	BIO2003	Approaches to Experimental Research
30 Credits (15 ECTS)	BIO2405	Food Safety
15 Credits (7.5 ECTS)	BIO2515	Pollution Prevention and Control
15 Credits (7.5 ECTS)	PRS2107	Housing in Public Health
15 Credits (7.5 ECTS)	BIO2510	Occupational Safety and Health Interventions
15 Credits (7.5 ECTS)	PRS2109	Housing Conditions and Intervention



BSc PUBLIC HEALTH

Academic Year 22/23 – Year 2 (Level 5)		Full Year Exchange
30 Credits (15 ECTS)	BIO2003	Approaches to Experimental Research
30 Credits (15 ECTS)	BIO2635	Health Policies and Interventions
15 Credits (7.5 ECTS)	PRS2107	Housing in Public Health
15 Credits (7.5 ECTS)	PRS2122	Leadership in Public Health
15 Credits (7.5 ECTS)	BIO2211	Surveillance and Assessment Methods
15 Credits (7.5 ECTS)	BIO2636	Health and Society

MEDICAL SCIENCE AND TECHNOLOGY COURSES



BSc BIOMEDICAL SCIENCE

Academic Year 22/23 – Year 2 (Level 5)		Full Year Exchange
30 Credits (15 ECTS)	BMS2075	Research Methods and Professional Development
15 Credits (7.5 ECTS)	BMS2135	Blood Sciences
15 Credits (7.5 ECTS)	BMS2145	Infection Sciences
30 Credits (15 ECTS)	BMS2515	Clinical Sciences
15 Credits (7.5 ECTS)	BMS2125	Cellular Sciences
15 Credits (7.5 ECTS)	BMS2225	Molecular and Genetics Science



BSc BIOMEDICAL ENGINEERING

Academic Year 22/23 – Year 2 (Level 5)		Full Year Exchange
30 Credits (15 ECTS)	PDE2401	Design Engineering Projects 2
30 Credits (15 ECTS)	BMS2975	Physiological Measurement
30 Credits (15 ECTS)	PDE2975	Design of Medical Devices
30 Credits (15 ECTS)	PDE2985	Medical Equipment Lifecycle



BSc NUTRITION

Academic Year 22/23 – Year 2 (Level 5)		Full Year Exchange
30 Credits (15 ECTS)	BMS2435	Diet and Health
30 Credits (15 ECTS)	BMS2405	Nutritional Biochemistry
30 Credits (15 ECTS)	BMS2425	Food and Nutrition Science
30 Credits (15 ECTS)	BMS2475	Research Methods and Professional Development



BSc PHARMACEUTICAL CHEMISTRY

Academic Year 22/23 – Year 2 (Level 5)		Full Year Exchange
15 Credits (7.5 ECTS)	BMS2715	Physical Chemistry
15 Credits (7.5 ECTS)	BIO2419	Pharmaceutical Chemistry
30 Credits (15 ECTS)	BMS2725	Practical Chemistry
15 Credits (7.5 ECTS)	BMS2765	Inorganic Chemistry
15 Credits (7.5 ECTS)	BIO2417	Advanced Organic Chemistry 1
30 Credits (15 ECTS)	BMS2007	Research Methods and Practice

FACULTY OF SCIENCE AND TECHNOLOGY: POSTGRADUATE SEMESTER EXCHANGE



MSc/PGDip/PGCert BIOMEDICAL SCIENCE (Medical Immunology)

Academic Year 22/23 - Level 7

Term 1

15 Credits (7.5 ECTS)	BMS4887	Experimental Design and Statistics
15 Credits (7.5 ECTS)	BMS4977	Advanced Signal Processing
15 Credits (7.5 ECTS)	BMS4517	Immunology

Term 2

15 Credits (7.5 ECTS)	BMS4777	Biomedical Ethics and Law
15 Credits (7.5 ECTS)	BMS4677	Leadership and Management
15 Credits (7.5 ECTS)	BMS4527	Immunopathology
15 Credits (7.5 ECTS)	BMS4537	Immunotherapeutic and Immunoassays





MSc/PGDip/PGCert BIOMEDICAL SCIENCE (Medical Microbiology)

Academic Year 22/23 – Level 7			Term 1
15 Credits (7.5 ECTS)	BMS4887	Experimental Design and Statistics	
15 Credits (7.5 ECTS)	BMS4977	Bioanalytical Techniques	
15 Credits (7.5 ECTS)	BMS4417	Infectious Agents	
15 Credits (7.5 ECTS)	BMS4447	Laboratory Diagnosis and Safety	
			Term 2
15 Credits (7.5 ECTS)	BMS4177	Bioethics	
15 Credits (7.5 ECTS)	BMS4677	Leadership and Management	
15 Credits (7.5 ECTS)	BMS4427	Human Infectious Disease (Specialist)	
15 Credits (7.5 ECTS)	BMS4437	Control of Infectious Disease (Specialist)	



MSc/PGDIP/PGCERT BIOMEDICAL SCIENCE (CLINICAL BIOCHEMISTRY) (Clinical chemistry)

Academic Year 22/23 – Level 7			Term 1
15 Credits (7.5 ECTS)	BMS4417	Clinical Disorders	
15 Credits (7.5 ECTS)	BMS4127	Developmental Biochemistry	
15 Credits (7.5 ECTS)	BMS4887	Experimental Design and Statistics	
15 Credits (7.5 ECTS)	BMS4977	Bioanalytical Techniques	
			Term 2
15 Credits (7.5 ECTS)	BMS4137	Endocrinology and Metabolism	
15 Credits (7.5 ECTS)	BMS4147	Bioanalysis and Clinical Toxicology	
15 Credits (7.5 ECTS)	BMS4677	Leadership and Management	
15 Credits (7.5 ECTS)	BMS4177	Bioethics	



MSc/PGDip/PGCert BIOMEDICAL SCIENCE (Cellular Pathology)

Academic Year 22/23 – Level 7		Term 1
15 Credits (7.5 ECTS)	BMS4887	Experimental Design and Statistics
15 Credits (7.5 ECTS)	BMS4977	Advanced Bioanalytical Techniques
15 Credits (7.5 ECTS)	BMS4217	Major Organ Histopathology
15 Credits (7.5 ECTS)	BMS4247	Pathological Basis of Disease
		Term 2
15 Credits (7.5 ECTS)	BMS4777	Biomedical Ethics and Law
15 Credits (7.5 ECTS)	BMS4677	Leadership and Management
15 Credits (7.5 ECTS)	BMS4237	Genetics Disorders
15 Credits (7.5 ECTS)	BMS4227	Cancer





MSC/PGDIP/PGCERT CANCER BIOLOGY AND THERAPEUTICS

Academic Year 22/23 – Level 7			Term 1
15 Credits (7.5 ECTS)	BMS4887	Experimental Design and Statistics	
15 Credits (7.5 ECTS)	BMS4977	Advanced Bioanalytical Techniques	
15 Credits (7.5 ECTS)	BMS4327	Haemato-oncology	
15 Credits (7.5 ECTS)	BMS4507	Advances in Tumour Diagnostics	
			Term 2
15 Credits (7.5 ECTS)	BMS4777	Biomedical Ethics and Law	
15 Credits (7.5 ECTS)	BMS4677	Leadership and Management	
15 Credits (7.5 ECTS)	BMS4227	Cancer	
15 Credits (7.5 ECTS)	BMS4547	Cancer therapeutics	



MSC PUBLIC HEALTH

Academic Year 22/23 – Level 7			Term 1
15 Credits (7.5 ECTS)	BIO4503	Applied Epidemiology	
15 Credits (7.5 ECTS)	PRS4100	Health Economics	
30 Credits (15 ECTS)	PRS4202	Policy and Public Health Strategy	
			Term 2
15 Credits (7.5 ECTS)	PRS4520	Applied Sustainability Case Study	
15 Credits (7.5 ECTS)	PRS4700	Environmental Assessment and Management	
30 Credits (15 ECTS)	PRS4299	Research Methods	



MSC SUSTAINABILITY AND ENVIRONMENTAL MANAGEMENT

Academic Year 22/23 – Level 7			Term 1
15 Credits (7.5 ECTS)	PRS4510	Global Sustainability Issues and Practice	
15 Credits (7.5 ECTS)	PRS4530	Environmental Law and Governance	
			Term 2
15 Credits (7.5 ECTS)	PRS4520	Applied Sustainability Case Study	
15 Credits (7.5 ECTS)	PRS4700	Environmental Assessment and Management	
30 Credits (15 ECTS)	PRS4299	Research Methods	



MSC/PGDIP/PGCERT BIOMEDICAL SCIENCE

Academic Year 22/23 – Level 7

Term 1

30 Credits (15 ECTS)	BMS4517	Immunology
15 Credits (7.5 ECTS)	BMS4887	Experimental Design and Statistics
15 Credits (7.5 ECTS)	BMS4977	Advanced Bioanalytical Techniques

Term 2

15 Credits (7.5 ECTS)	BMS4427	Human Infectious Diseases
15 Credits (7.5 ECTS)	BMS4437	Control of Infectious Disease
15 Credits (7.5 ECTS)	BMS4677	Leadership and Management
15 Credits (7.5 ECTS)	BMS4177	Bioethics



COMPUTER SCIENCE DEPARTMENT

COMPUTER AND COMMUNICATION ENGINEERING COURSES

BSc COMPUTER NETWORKS

Academic Year 22/23 – Year 2 (Level 5)		Full Year Exchange
30 Credits (15 ECTS)	CST2500	Data Communications
30 Credits (15 ECTS)	CST2510	Network Practices and Operations
30 Credits (15 ECTS)	CST2520	Network and Protocols Analysis
30 Credits (15 ECTS)	CST2560	Project Management and Professional Practice



BSc CYBER SECURITY AND DIGITAL FORENSICS

Academic Year 22/23 – Year 2 (Level 5)		Full Year Exchange
30 Credits (15 ECTS)	CST2520	Network and Protocols Analysis
30 Credits (15 ECTS)	CST2530	Cyber Security and Digital Forensics Compliance
30 Credits (15 ECTS)	CST2570	Internet Technologies
30 Credits (15 ECTS)	CST2580	Digital Incident Scene Investigation and Analysis

BEng ROBOTICS

Academic Year 22/23 – Year 2 (Level 5)		Full Year Exchange
30 Credits (15 ECTS)	PDE2400	Design Engineering Projects 2
30 Credits (15 ECTS)	PDE2410	Engineering in Context
30 Credits (15 ECTS)	PDE2420	Control Systems
30 Credits (15 ECTS)	PDE2440	Robotics and Mechatronics

COMPUTER SCIENCE AND INFORMATICS COURSES



BSc COMPUTER SCIENCE

Academic Year 22/23 – Year 2 (Level 5)		Full Year Exchange
30 Credits (15 ECTS)	CST2110	Object-Oriented Programming
30 Credits (15 ECTS)	CST2120	Web Applications and Databases
30 Credits (15 ECTS)	CST2550	Software Engineering Management and Development
30 Credits (15 ECTS)	CST2555	Operating Systems and Computer Networks



BSc BUSINESS INFORMATION SYSTEMS

Academic Year 22/23 – Year 2 (Level 5)		Full Year Exchange
30 Credits (15 ECTS)	CST2310	Information Systems Analysis and Design
30 Credits (15 ECTS)	CST2320	Project Planning and Research for Information Systems Professionals
30 Credits (15 ECTS)	CST2330	Data Analysis for Enterprise Modelling
30 Credits (15 ECTS)	CST2340	Database Systems: Design and Implementation



BSc INFORMATION TECHNOLOGY

Academic Year 22/23 – Year 2 (Level 5)		Full Year Exchange
30 Credits (15 ECTS)	CST2120	Web Applications and Databases
30 Credits (15 ECTS)	CST2130	Data Management and Business Intelligence
30 Credits (15 ECTS)	CST2560	Project Management and Professional Practice
Choose 1 module from list below		
30 Credits (15 ECTS)	CST2310	Information Systems Analysis and Design
30 Credits (15 ECTS)	CST2555	Operating Systems and Computer Networks

DEPARTMENT OF DESIGN ENGINEERING AND MATHEMATICS



BSc ARCHITECTURAL TECHNOLOGY

Academic Year 22/23 – Year 2 (Level 5)		Full Year Exchange
30 Credits (15 ECTS)	PDE2700	Building Technology and Architecture Design 2 (BIM)
30 Credits (15 ECTS)	PDE2710	Design Analysis and Sustainability
30 Credits (15 ECTS)	PDE2720	Technical Specification, Surveying and Buildability
30 Credits (15 ECTS)	PDE2730	Business Processes and Procurement Management



BEng DESIGN ENGINEERING

Academic Year 22/23 – Year 2 (Level 5)		Full Year Exchange
30 Credits (15 ECTS)	PDE2410	Engineering in Context
30 Credits (15 ECTS)	PDE2420	Control Systems
Choose 2 modules from list below		
30 Credits (15 ECTS)	PDE2400	Design Engineering Projects 2
30 Credits (15 ECTS)	PDE2440	Robotics and Mechatronics



BEng ELECTRONIC ENGINEERING

Academic Year 22/23 – Year 2 (Level 5)		Full Year Exchange
30 Credits (15 ECTS)	PDE2102	Digital System Design
30 Credits (15 ECTS)	PDE2103	Signal Processing and Communications
30 Credits (15 ECTS)	PDE2110	Electronic Engineering Projects 2
30 Credits (15 ECTS)	PDE2111	Analog Electronics



BEng MECHATRONICS

Academic Year 22/23 – Year 2 (Level 5)		Full Year Exchange
30 Credits (15 ECTS)	PDE2400	Design Engineering Projects 2
30 Credits (15 ECTS)	PDE2410	Engineering in Context
30 Credits (15 ECTS)	PDE2420	Control Systems
30 Credits (15 ECTS)	PDE2440	Robotics and Mechatronics

BEng COMPUTER SYSTEMS ENGINEERING

Academic Year 22/23 – Year 2 (Level 5)		Full Year Exchange
30 Credits (15 ECTS)	PDE2100	Computer Systems Engineering Projects 2
30 Credits (15 ECTS)	PDE2101	Engineering Software Development
30 Credits (15 ECTS)	PDE2102	Digital System Design
30 Credits (15 ECTS)	PDE2103	Signal Processing and Communications

BEng PRODUCT DESIGN ENGINEERING

Academic Year 22/23 – Year 2 (Level 5)		Full Year Exchange
30 Credits (15 ECTS)	PDE2312	Advanced Technical Prototyping
30 Credits (15 ECTS)	PDE2352	Advanced Technical Design Tool
60 Credits (30 ECTS)	PDE2360	Design Methods, Processes and Practice

BEng ROBOTICS

Academic Year 22/23 – Year 2 (Level 5)		Full Year Exchange
30 Credits (15 ECTS)	PDE2400	Design Engineering Projects 2
30 Credits (15 ECTS)	PDE2410	Engineering in Context
30 Credits (15 ECTS)	PDE2420	Control Systems
30 Credits (15 ECTS)	PDE2440	Robotics and Mechatronics

BA PRODUCT DESIGN

Academic Year 22/23 – Year 2 (Level 5)		Full Year Exchange
30 Credits (15 ECTS)	PDE2311	Advanced Prototyping
30 Credits (15 ECTS)	PDE2351	Advanced Design Tools
60 Credits (30 ECTS)	PDE2360	Design Methods, Processes and Practice

FACULTY OF SCIENCE AND TECHNOLOGY: POSTGRADUATE SEMESTER EXCHANGE

MSc COMPUTER NETWORKS AND NETWORK DESIGN

Academic Year 22/23 – Level 7		Term 1
15 Credits (7.5 ECTS)	CST4500	Computer Networks and internetworking
15 Credits (7.5 ECTS)	CST4522	Operating Systems and Application Environment
		Term 2
15 Credits (7.5 ECTS)	LEX4141	Network Security and Mechanisms
15 Credits (7.5 ECTS)	LEX4708	Enterprise Network Troubleshooting

MSc FINANCIAL MATHEMATICS

Academic Year 22/23 – Level 7		Term 1
15 Credits (7.5 ECTS)	MS04113	Portfolio analysis
15 Credits (7.5 ECTS)	MS04115	Fixed income and derivatives
15 Credits (7.5 ECTS)	MS04354	Probability theory and mathematical analysis
		Term 2
15 Credits (7.5 ECTS)	MS04358	Stochastic Processes
15 Credits (7.5 ECTS)	MS04522	Game and decision theories

MSc MECHATRONIC SYSTEMS ENGINEERING

Academic Year 22/23 – Level 7		Term 1
60 Credits (7.5 ECTS)	PDE4501	Mechatronics Systems (Hardware and Software Portfolio)

MSc ROBOTICS

Academic Year 22/23 – Level 7		Term 2
15 Credits (7.5 ECTS)	PDE4433	Machine Learning for Robotics Compulsory
15 Credits (7.5 ECTS)	PDE4434	Intelligent Sensing for Robotics Compulsory
30 Credits (30 ECTS)	PDE4435	Robotic Systems Integration Compulsory



MSC ENGINEERING MANAGEMENT

Academic Year 22/23 – Level 7

Term 2

15 Credits (7.5 ECTS) PDE4233 Human Resource Management in Engineering



MSc TELECOMMUNICATIONS ENGINEERING

Academic Year 22/23 – Level 7

Term 1

15 Credits (7.5 ECTS) PDE4825 Intelligent Environments & Internet of Things



MA/MSc CREATIVE TECHNOLOGY

Academic Year 22/23 – Level 7

Term 2

30 Credits (7.5 ECTS) CMT4605 Working in the Creative Industries



DEPARTMENT OF PSYCHOLOGY



BSc PSYCHOLOGY

Academic Year 22/23 – Year 2 (Level 5)		Full Year Exchange
30 Credits (15 ECTS)	PSY2004	Research Methods and Ethics in Psychology
30 Credits (15 ECTS)	PSY2006	Brain, Body and Mind
30 Credits (15 ECTS)	PSY2007	Social, Personality and Developmental Psychology
30 Credits (15 ECTS)	PSY2008	Contemporary Issues in Psychology



BSC PSYCHOLOGY WITH COUNSELLING SKILLS

Academic Year 22/23 – Year 2 (Level 5)		Full Year Exchange
30 Credits (15 ECTS)	PSY2005	Applied Psychology and Research Methods and Ethics
30 Credits (15 ECTS)	PSY2007	Social, Personality and Developmental Psychology
30 Credits (15 ECTS)	PSY2017	Therapeutic Applications of Cognitive Psychology, Neuroscience and Individual Differences
30 Credits (15 ECTS)	PSY2019	Approaches to Psychological Therapies



BSC PSYCHOLOGY WITH CRIMINOLOGY

Academic Year 22/23 – Year 2 (Level 5)		Full Year Exchange
15 Credits (7.5 ECTS)	CRM2271	Transforming Justice: Human Rights and Power in Contemporary Criminological Policy and Practice
30 Credits (15 ECTS)	PSY2005	Applied Psychology and Research Methods and Ethics
30 Credits (15 ECTS)	PSY2006	Brain, Body and Mind
30 Credits (15 ECTS)	PSY2007	Social, Personality and Developmental Psychology
15 Credits (7.5 ECTS)	CRM2272	Criminology and Practice: Working in Criminology



BSC PSYCHOLOGY WITH EDUCATION

Academic Year 22/23 – Year 2 (Level 5)		Full Year Exchange
30 Credits (15 ECTS)	PSY2004	Researching Lives: Social Investigation in the Contemporary World
30 Credits (15 ECTS)	PSY2006	Equality, Diversity and Inclusion
30 Credits (15 ECTS)	PSY2007	Social, Personality and Developmental Psychology
Choose 1 module from list below		
30 Credits (15 ECTS)	EDU2205	Equality, Diversity and Inclusion
30 Credits (15 ECTS)	EDU2314	Curriculum Studies: Primary Education

BSc PSYCHOLOGY WITH NEUROSCIENCE

Academic Year 22/23 – Year 2 (Level 5)		Full Year Exchange
30 Credits (15 ECTS)	BMS2955	Neurophysiology
30 Credits (15 ECTS)	PSY2004	Research Methods and Ethics in Psychology
30 Credits (15 ECTS)	PSY2006	Brain, Body and Mind
30 Credits (15 ECTS)	PSY2007	Social, Personality and Developmental Psychology

LONDON SPORTS INSTITUTE SPORTS AND EXERCISE SCIENCE AND REHABILITATION COURSES



BSc SPORTS AND EXERCISE REHABILITATION

Academic Year 22/23 – Year 2 (Level 5)		Full Year Exchange
30 Credits (15 ECTS)	SES2601	Research Methods
15 Credits (7.5 ECTS)	SES2602	Applied Sport and Exercise Nutrition
15 Credits (7.5 ECTS)	SES2603	Corrective Exercise Based Rehab
15 Credits (7.5 ECTS)	SES2606	Applied Soft Tissue Techniques
15 Credits (7.5 ECTS)	SES2607	Clinical Biomechanics
15 Credits (7.5 ECTS)	SES2604	Pitch-side and Immediate Care
15 Credits (7.5 ECTS)	SES2605	Introduction to Therapeutic Modalities



BSc SPORT EXERCISE SCIENCE (Strength and Conditioning)

Academic Year 22/23 – Year 2 (Level 5)		Full Year Exchange
30 Credits (15 ECTS)	SES2801	Research Methods
15 Credits (7.5 ECTS)	SES2802	Applied Sport and Exercise Nutrition
15 Credits (7.5 ECTS)	SES2803	Applied Performance Analysis
30 Credits (15 ECTS)	SES2804	Applied Sport and Exercise Science
30 Credits (15 ECTS)	SES2805	Applied Strength and Conditioning



BSc SPORT AND EXERCISE SCIENCE

Academic Year 22/23 – Year 2 (Level 5)		Full Year Exchange
30 Credits (15 ECTS)	SES2501	Research Methods
15 Credits (7.5 ECTS)	SES2502	Applied Sport and Exercise Nutrition
15 Credits (7.5 ECTS)	SES2503	Applied Performance Analysis
30 Credits (15 ECTS)	SES2504	Applied Physiology and Biomechanics
30 Credits (15 ECTS)	SES2505	Applied Sport Psychology



INTERNATIONAL MOBILITY TEAM



Middlesex University
Model Farmhouse
The Burroughs
Hendon
NW4 4BT



CONTACT US

Tel: (+44) 0208 411 5579

Email: exchanges@mdx.ac.uk

www.mdx.ac.uk



FOLLOW US



MDXInternationalMobility



Middlesex University International Mobility



NOTES

WWW.MDX.AC.UK

Join us



MiddlesexUniversity



MiddlesexUniversity



@MiddlesexUni



@MiddlesexUni



MiddlesexUniVideo